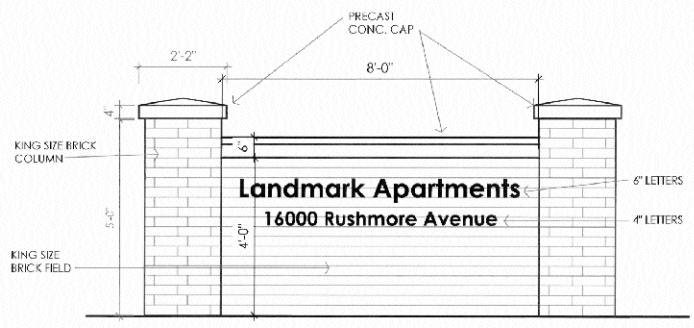
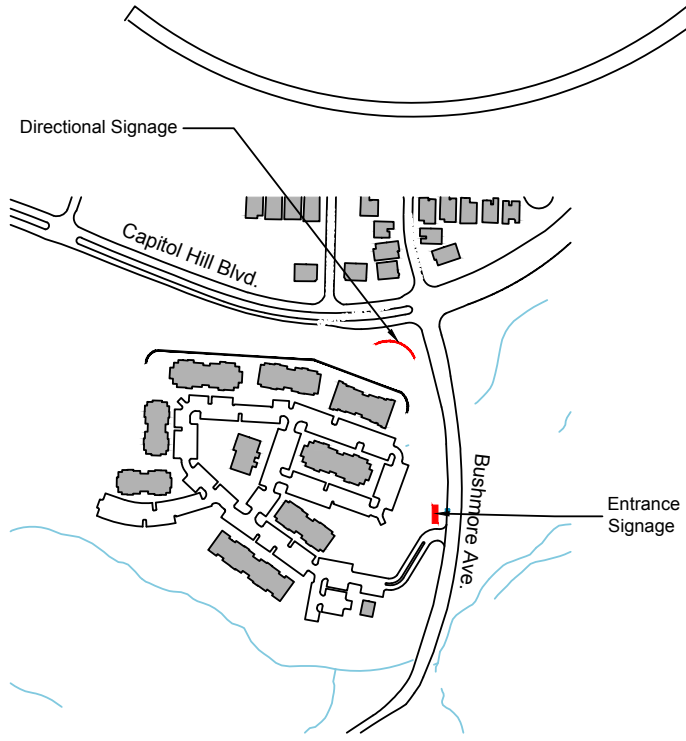


landmark Apartments
 <<< Leasing Center
 501 111-111



ENTRANCE SIGNAGE
 1/2" = 1'-0"
 THIS SIGN MEETS THE ORDINANCE REQUIREMENTS

Sketch

City of Little Rock Planning & Development

Case No: **Z-6120-Q**
 Name: Landmark Apartments
 Location: 16000 Rushmore Avenue

Title: Revised Long-form PD-R